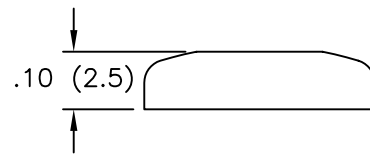
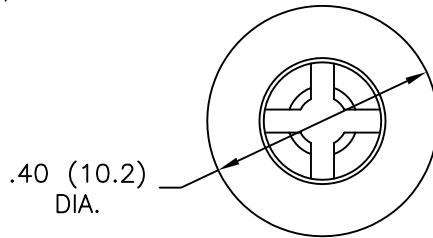


TYPICAL ASSEMBLY

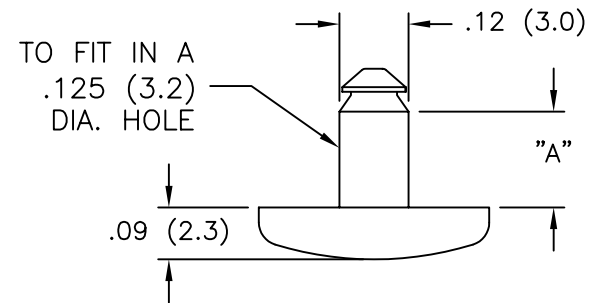
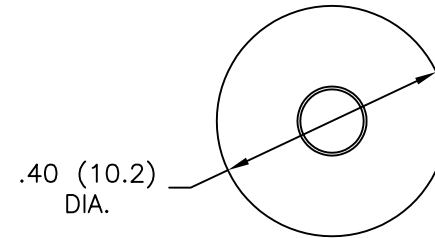


MBRR1-01

NOTES:

1. MATERIAL: NYLON 6/6 UL 94 V-2 (RMS-01).
2. COLOR: NATURAL.

PART NO.	"A"	PANEL THICKNESS MAX.
MBRP1-030-01	.063 (1.60)	.030 (0.76)
MBRP1-062-01	.095 (2.41)	.062 (1.57)
MBRP1-100-01	.133 (3.38)	.100 (2.54)
MBRP1-125-01	.158 (4.01)	.125 (3.18)
MBRP1-187-01	.220 (5.59)	.187 (4.75)
MBRP1-250-01	.283 (7.19)	.250 (6.35)
MBRR1-01		



MBRP1-XXX-01

TITLE: <b>MINI BARBED RIVET</b>			DWG IN IN (MM)				
TOLERANCES UNLESS NOTED .XX=±.010 .XXX=±.005 FRAC=±1/64 ANG=±1°			FILE # MBR MAT'L: SEE NOTES RE: RICHCO, INC.	DWN: R.S. DT: 04-20-95 APP:	DT: RICHCO INC. PO BOX 804238, CHICAGO, 60680 (773) 539-4060	FINAL PART # SEE TABLE	PRINT TYPE CA
B	SEE ECN #1285 FOR CHANGES	SK 02.12.07					
A	CHANGED FILE NO. AND TITLE BLOCK	SM 05.24.01					
REV	DESCRIPTION	ENGR DATE					